

Chain Swivels

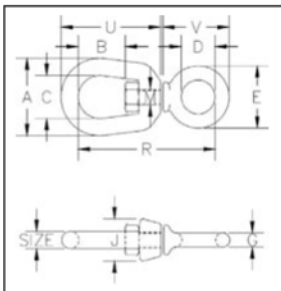
- FORGED SWIVELS**
- Hot dip Galvanized
 - Quenched & Tempered
 - Crosby products meet or exceed all requirements of ASME B30.26 including identification, ductility, design factor, proof load and temperature requirements. Importantly, Crosby products meet other critical performance requirements including fatigue life, impact properties and material traceability, not addressed by ASME B30.26.

401, 402 and 403 swivels are positioning devices and are not intended to rotate under load. For load swivels see pages 116-119. Use in corrosive environment requires shank and nut inspection in accordance with ASME B30.10-1.2.1(b)(2)(c)2000.



G-401 Chain Swivels

- Meets the performance requirements of Federal Specification RR-C-271D, Type VII, Class 1, except for those provisions required of the contractor. For more information, see page 391.



Size (in.)	G-401 Stock No.	Working Load Limit (lbs.)*	Weight Each (lbs.)	Dimensions (in.)										
				A	B	C	D	E	G	J	M	R	U	V
1/4	1016233	850	.13	1.25	.69	.75	.62	1.12	.25	.69	.31	2.25	1.69	1.25
5/16	1016251	1250	.25	1.63	.81	1.00	.75	1.38	.31	.81	.38	2.72	2.06	1.47
3/8	1016279	2250	.54	2.00	.94	1.25	1.00	1.75	.38	1.00	.50	3.44	2.50	1.88
1/2	1016297	3600	1.12	2.50	1.31	1.50	1.25	2.25	.50	1.31	.63	4.25	3.19	2.44
5/8	1016313	5200	2.09	3.00	1.56	1.75	1.50	2.75	.62	1.50	.75	5.13	3.88	2.94
3/4	1016331	7200	3.09	3.50	1.75	2.00	1.75	3.25	.75	1.88	.88	5.78	4.94	3.46

* Ultimate Load is 5 times the Working Load Limit.

